



Introduction to Problematic Sexual Behavior (PSB)

October 2022

Children's Advocacy Centers of Texas

We are committed to ensuring that every child victim of abuse in Texas receives critical services to put them on a path towards safety, justice, and healing.



And we believe in a future free of child sexual abuse.



Serving Texas' Children

The CAC Multidisciplinary Team (MDT) Model



Joint Investigation
Coordination



Forensic
Interviews



Family Advocacy
& Victim Support



Trauma-Focused
Therapy



Medical
Evaluations



Multi-Disciplinary
Case Review



Serving Texas' Children



- ❖ 70 CACs
- ❖ 206 Counties
- ❖ 98% Texas population



**OVER
1,400** dedicated CAC
staff members



**OVER
1,000** law enforcement
jurisdictions



**MORE THAN
230** district and
county attorneys



**MORE THAN
300** medical and mental
health professionals

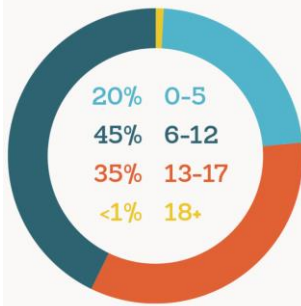


**EVERY DFPS
REGION IN
THE STATE** including Child Protective
Investigations, Child Care
Investigations, and Adult
Protective Services



Serving Texas' Children

AGES SERVED:



TYPES OF ABUSE:

- 67% sexual abuse
- 17% physical abuse
- 6% child witness to crime
- 6% neglect
- 2% sexual & physical abuse
- 1% fatality
- 1% other

IN 2021,

68,018

CHILDREN RECEIVED
CRITICAL SERVICES
AT A TEXAS CAC



Understanding the Issue



PSB Defined

Children who initiate behaviors involving sexual body parts that are developmentally inappropriate or potentially harmful to themselves or others.

Chaffin, Berliner, Block, Johnson, Friedrich, Louis, & Silovsky, 2008
Kelley et al., 2019



When two children are involved

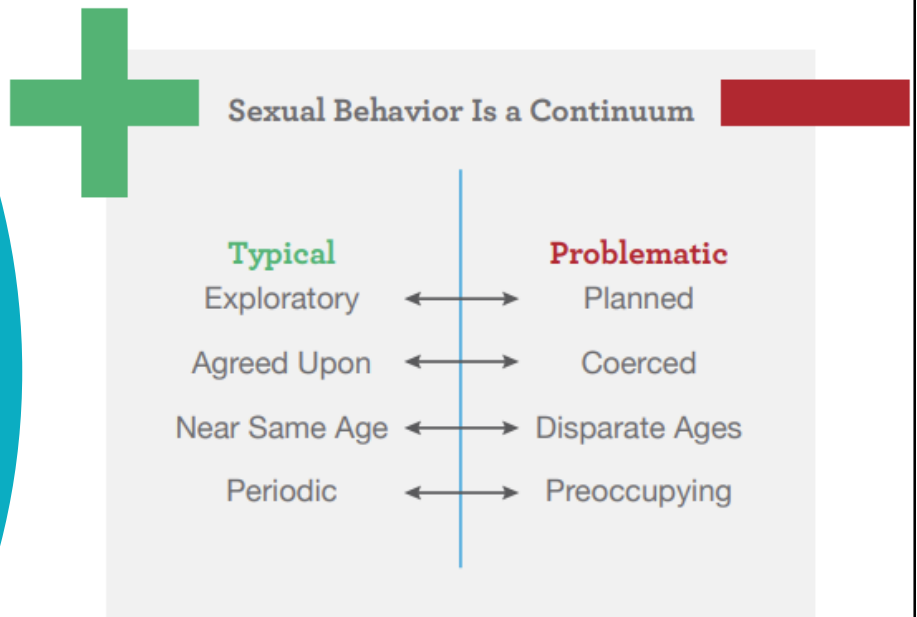


Image from NCA [2017-PSB-Fact-Sheet-Overview-3.pdf \(nationalchildrensalliance.org\)](https://www.nationalchildrensalliance.org)

Can include non-contact acts, such as:

Unwanted sexual references in conversation

Indecent exposure

Forcing another child to observe others' sexual behavior

Taking pornographic pictures or forcing another child to view pornography



Youth with PSB are children first

Reasons they might engage in PSB include:

- History of abuse
- Lack of appropriate supervision
- Exposure to sex before developmentally appropriate
- Difficulty with self-regulation and impulse control



Up to 50% of CSA cases involve another child

(Finkelhor, Ormrod, & Chaffin, 2009; Finkelhor et al., 2014)

Nationally 25% of all cases seen at CACs are youth-initiated PSB (2019 NCA Survey)

Sibling SA most common and least reported intrafamilial SA

(Yates & Allardyce, 2021)



Prevalence



Extremely High Desistance Rate

Research indicates that youth who have engaged in PSB with another child and receive evidence-based treatment have a 97%-98% desistance rate.

Action Steps & Resources



Continuum of Responses

- A continuum of behavior requires a continuum of responses.
- Normative behavior can often be redirected without additional intervention.
- If the behavior causes a suspicion of abuse, it must always be reported.
 - It is not a mandated reporter's job to determine if abuse has occurred.

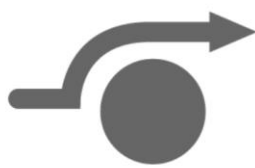


Responding to Sexual Behavior *In the Moment*



Pause

- Remain calm
- Collect your thoughts



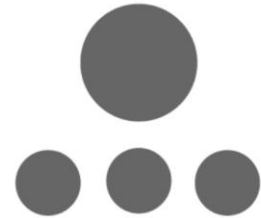
Redirect

- Change the routine or environment
- Suggest other activities



Listen

- Find out information
- Understand from the child's viewpoint



Teach

- Communicate expectations and rules
- Reinforce appropriate behavior

Image from [Responding to Sexual Behavior Challenges | Virtual Lab School](#)



Responding to Sexual Behavior *After the Fact*



Reflect

- Consider all known information
- Determine the type of behavior



Prepare

- Know how to respond in the moment: *pause, redirect, listen, and teach*, in the future



Communicate

- Communicate with the teaching team
- Determine communication with families

Image from [Responding to Sexual Behavior Challenges | Virtual Lab School](#)



Reflection Questions

- Is the behavior random or infrequent?
- Is the behavior typical for the child's age and developmental ability?
- Is the behavior driven by curiosity, exploration, and playfulness?
- If other children are involved, is it mutual and good-humored?
- If other children are involved, do they know each other well and are they of a similar age and development (<2 years)?
- Is the behavior easily redirected?



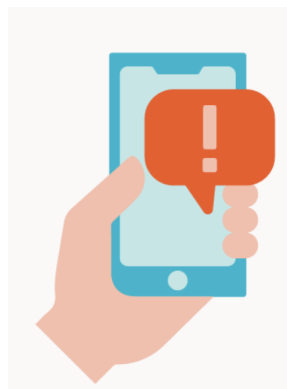
Making a Report of Abuse

Report suspected abuse to the 24/7 Texas Abuse hotline.

800.252.5400

www.TXAbuseHotline.org

Texas Family Code § 261.103



Provide basic information about the child and any known circumstances re: his/her home life.

Answer all questions thoroughly.

Provide a detailed description of the outcry.

Texas Family Code § 261.104



Resources

Virtual Lab School (VLS): Sexual Development & Behavior in Children and Youth

- Specific to educators and includes guides and tools to support your responses, communication, and preparedness when you observe sexual behavior in children in your care
- Guides also available for families
- Specific to children 12 and under
- virtuallabschool.org

National Center on the Sexual Behavior of Youth

- Resources for parents/caregivers and professionals
- ncsby.org

Stop It Now!: Children and Youth Struggling with Unsafe or Harmful Sexual Behaviors

- stopitnow.org



Treatment Considerations

Evidence-informed treatment options are available at some CACs.

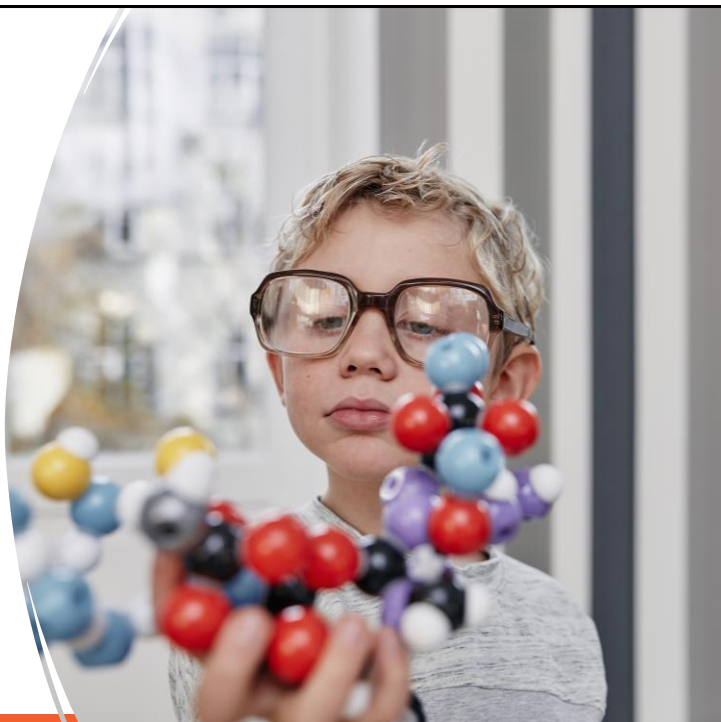
Commonalities across treatment

- Required caregiver component
 - Supervision & safety
 - Behavior management strategies
 - Boundaries
 - Sexual behavior rules
- Teaching children about healthy relationships and boundaries
 - Self-control strategies & social skills
 - Sexual behavior rules



Study on the “State of our State”

- Mixed Methods
- Interviews with key informants, focus groups, surveys
- MDT partners, as well as judges, probation officers, and guardians ad litem



PSB Guide for caregivers and professionals working with children

- Target date: Summer 2023

Children's Advocacy Centers PSB Advisory Group

- First meeting: October 20th

Additional PSB Projects



Thank You

Feel free to contact us!

Catherine Henning
Strategy Development Manager
chenning@cactx.org

Hannah Gibson-Moore, LCSW-S
Strategy Development Principal
hmoore@cactx.org

